

## ANTELOPE COUNTY HISTORICAL MUSEUM

Hwy 275 & 5<sup>th</sup> Street

Neligh, NE

402-887-5010

Summer Hours: Tuesday through Saturday, 1pm to 5pm

Admission \$3.00, Children under 12 and students free

Website: [www.AntelopeCountyMuseum.org](http://www.AntelopeCountyMuseum.org)

The Antelope County Museum maintains three facilities: the main museum, a reproduction log cabin, and the pioneer church.

Visitors can view an excellent display of artifacts representing the early history of Antelope County. The museum also contains an extensive document and photograph collection. Featured displays include: the White Buffalo Girl Display and the 1890's wooden Eclipse windmill.



## PASSPORT TO HERITAGE INSTRUCTIONS

When you visit participating museums between Memorial Day Weekend and Labor Day, hand them this passport booklet. The museum will place a sticker over their listing on the center page of this booklet.

Once you have visited the museums and gathered your stickers, remove the entire center sheet of this booklet, fill out the form, and send it to:

*Northeast Nebraska RC&D;*

*702 E. Park Ave.;*

*Plainview, NE 68769.*

**Send the entire center sheet –with form and stamped listings; postmarked by September 18, 2018.**

If you have collected stickers from all 11 participating museums, you will be entered into a drawing for a cash prize of \$300.00;

9 or more participating museums, you will be entered into a drawing for a cash prize of \$100.00;

5 or more participating museums, you will be entered into a drawing for a cash prize of \$50.00.

**Prizes will be drawn on September 26, 2018**

### McNALLY LAW OFFICE

Jct. of Hwys. 275/14, Neligh  
(West of Casey's)

402-887-5022      [leagle@mcnallylaw.net](mailto:leagle@mcnallylaw.net)

Jim McNally & Joe McNally

### Mary's Restaurant



108 S. West Street

402-582-4244

Sun – 8am to 2pm; Mon- Closed

Tues thru Thurs – 11am to 9pm

Fri – 11am to 10pm; Sat – 8am to 10pm

*Mary's is back! New address, same great food!*



## ASHFALL FOSSIL BEDS

86930 517 Ave., 2 miles west and 6 miles north of Royal, NE  
402-893-2000

May 1 to Memorial Day Weekend

Tuesday through Saturday, 10am to 4pm

Memorial Day Weekend to Labor Day

Monday through Saturday 9am to 5pm; Sunday, 11am to 5pm

After Labor Day to 2<sup>nd</sup> weekend in October

Tuesday through Saturday, 10am to 4pm; Sunday, 1pm to 4pm

Admission \$7.00 age 3 and up, plus Nebraska State Park Entry Permit  
Required

Website – [www.ashfall.unl.edu](http://www.ashfall.unl.edu)

Watch as paleontologists continue the discovery, unearthing intact skeletons of barrel-bodied rhinos, three-toed horses, llama-like camels, and saber-toothed deer entombed by supervolcanic eruption 12 million years ago. Exciting discoveries are unearthed every summer in the new 17,500 square foot Hubbard Rhino Barn.

## CEDAR COUNTY HISTORICAL MUSEUM

304 W. Franklin, Hartington, NE

402-254-6597

May through September,

Sunday, 2pm to 4pm

Or call number above to schedule a visit

Admission Free, Donations Welcome

Stroll the lovely grounds of this turn of the century home. View original furniture, glass negatives, naturalization records of Cedar County, local history books and biographies, a map of Cedar County with pictures of each original school and its location. The museum also contains a Veterans Room, Fashion Room, Civil War memorabilia and Custer's Boots (maybe). Also see the County's oldest log cabin (1869), carriage house, and a large exhibit building containing an eight-legged lamb and a two-snouted pig.



## Green Gables of Pleasant Valley



517 Ave. & 865 Rd

Orchard, NE 68764

402-893-5800

WEDNESDAY - SUNDAY

11:00-4:00

LUNCH \* DESSERT \* SHOPPING

\*FLEA MARKETS WILL BE LAST SATURDAY  
IN JUNE, JULY, AUGUST AND SEPTEMBER

4 miles south of Ashfall Fossil Beds



310 S. Robinson Ave.

Hartington, NE 68739

402-254-7451

*Get a Large Pizza For Medium Price*



## CREIGHTON HISTORICAL CENTER

716 Main Street, Creighton, NE  
 402-358-3377 or 402-358-3369  
 Tuesday and Thursday, 8am to 5pm  
 Admission Free, Donations Welcome

Housed in a former bar, the Creighton Historical Center contains rare displays dating back to 1884. Visitors can view photos, memorabilia and displays from Creighton's and Knox County's past. As visitors enter the Historical Center, they see a depot counter that was from the old Creighton train depot. A Veteran's Section honors the men and women who served in the armed forces of the United States, and contains the uniform of one of General MacArthur's drivers. The Bedroom Section contains beautiful quilts, dresses, and paintings from Orin A. H. Bruce, the founder of Creighton. The Doctor's Section displays tools from an old dental office, a doctor's leather case for making house calls, a nurse's uniform, and candy strip dress. A School Section contains a desk, a cheerleader outfit and hand bell.

There will be special activities at the museum during Berry Pepper Days, June 15, 16, and 17 with the Museum open from 8am to 4:30pm on June 15 and 16; and 8am to 4pm on June 17.



**Brockhaus Funeral Homes**  
[www.brockhausfuneralhome.com](http://www.brockhausfuneralhome.com)  
 402-358-3236

*"Serving Northeast Nebraska with Dignity"*  
 Creighton, Verdigre, Niobrara, Bloomfield, Wausa,  
 Spencer, Tilden, and Norfolk

## DIXON COUNTY MUSEUM

Corner of 3<sup>rd</sup> & Clark, Allen, NE  
 402-287-2885  
 June, July, and August,  
 Sunday, 2pm to 4pm  
 Or call number above for special tours  
 Admission Free, Donations Welcome

The Museum consists of 5 buildings with collections and displays of items the early farmers and homemakers of Dixon County used in their everyday life. The main Museum displays items our grandparents used. It brings back those times of yesteryear.

One big machine shed has a collection of tools and machinery our forefathers owned. Since Dixon County was probably settled a lot with the Railroads coming, one building is devoted to Railroad memories.

The Museum has a one room country school. There is also a scrapbook of photos of Dixon County Schools. The research room has copies of newspapers from 8 towns in Dixon County. "Saturday Night at the Museum" programs are held monthly during the summer.







## GRAVES LIBRARY MUSEUM DEPOT RAILROAD MUSEUM

Graves Library Museum – 206 West 3<sup>rd</sup> St;  
 Depot Railroad Museum – 101 E. 1<sup>st</sup> St, Wakefield, NE  
 402-369-0449  
 Saturday, 10am to 12pm  
 Admission Free, Donations Welcome

The Library Museum building was one of the most luxurious libraries in the area when it was constructed in 1915 by Philo Graves and is listed on the Nebraska Historical Society Register. Thousands of historical items are displayed, some dating back to 1881. The Graves Museum basement is home to Russ Marshall's antique wrench collection. The Depot Museum is home to Lefty Olson's massive collection of Wakefield memorabilia as well as a large section dedicated to the town's railroad history with many working toy railroad displays.

## MARS HISTORICAL AREA GHOST TOWN TOURS

86951 519 Ave., 7 miles north of Royal, NE; or from Ashfall Fossil Beds go ¾ mile north, 1.5 miles east, and ½ mile south.

402-847-3415

By appointment only, call number above to schedule a 3 hour tour.

Tour cost - \$15 per person age 6 and up; minimum of 2 people

Facebook Page: [www.facebook.com/marsnebraska](http://www.facebook.com/marsnebraska)

Tour the site of the first settlement in the Verdigris Creek Valley. View old wagon trails, site of the general store, livery stable, blacksmith shop, and archeological excavation of an old pioneer dugout. Hear stories from the past, visit graves of some early pioneers, and witness a grave-witching demonstration. Also view the old haunted granary where there was a murder in 1889 (and possibly get a photo of an orb!)



**Gragert's**  
**GROCERY STORE**  
 "Your Hometown Grocer"  
 Creighton, Nebraska • Phone 358-3772

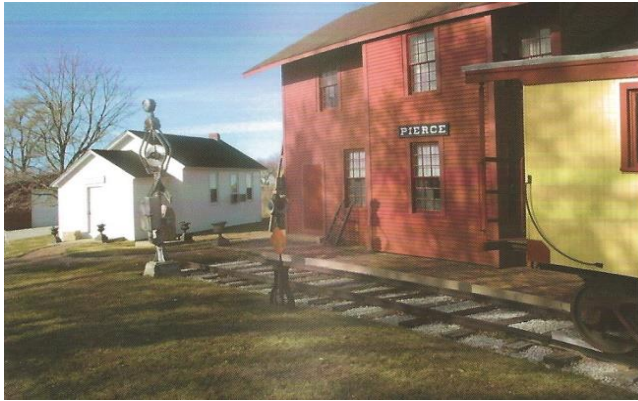
**Open**  
 EVERYDAY  
 Monday - Saturday  
 8:00 am - 9:00 pm  
 Sunday  
 8:30 am - 6:00 pm

• We Welcome WIC & Food Stamps • Rug Doctor  
 • We Deliver Daily • Dry Cleaning

**BOYD'S**  
 ELECTRICAL SERVICE, INC.

51976 HWY 275  
 Clearwater, NE 68726  
 402-887-4653

For all your Industrial, Commercial, Agricultural and Residential electrical needs.



## PIERCE HISTORICAL SOCIETY MUSEUM

Located in Gilman Park, Pierce, NE  
 402-392-4265, 402-329-6897, 402-329-4022  
 Summer Hours: Sunday, 1:30 p.m. to 4:30 p.m.  
 Or by Appointment (Call numbers above)  
 Admission Free, Donations Welcome  
 Facebook: Pierce Historical Society  
 Email: museum@ptcnet.net

Pierce County Historical Society, now the Pierce Historical Society, founded in 1934 for the 75<sup>th</sup> anniversary of Pierce county founded in 1859, before Nebraska became a state in 1867. The society participated in various activities through the years.

The museum complex was developed for the 1976 Bicentennial of the United States. The museum complex located in Gilman Park is comprised of five buildings: Main entrance building has the businesses of main street, graduation photos, reading library; Kratochvil Blacksmith Shop was donated and furnished by the Kratochvil family; Metal Building with farm equipment machinery including the Riley Covered Wagon built from cottonwood trees from the original Riley homestead property south of Pierce; Chicago Northwestern Railroad Depot was building in 1880, and moved to the park in 1968 – renovated and opened July 4, 1976; District 7 Schoolhouse.

New displays coming in 2018 include “Sophie’s Playroom” for kids and a transportation area including a license plate display.

## PLAINVIEW’S 1880 RAILROAD DEPOT MUSEUM

304 S Main Street, Plainview, NE  
 402-582-4730; 402-582-4748, 402-582-3854, or 402-582-4543  
 Open June, July, August; Tuesday, Wednesday, Thursday  
 1pm to 4pm; Or By Appointment  
 Admission Free, Donations Welcome.

The Museum is housed in a railroad depot that was built by the Fremont, Elkhorn, and Missouri Valley Railroad in 1880. The last train through the depot was the Chicago Northwestern Railroad that was traveling from Winner, SD to Norfolk, NE on June 19, 1978.

The upstairs of the Museum contains a complete apartment where the stationmaster lived. It is set up as if the station master and his family could still live there today!

The main floor of the Museum has many antiques on display, including a large wheel bicycle, a 1917 Edison record player, medical and dental equipment (including new display of dental chair and equipment from Dr Bernecker’s office). There is a model train display with a miniature replica of Plainview as it might have appeared in the past.

The museum also houses a new display from the filming of the “Nebraska” movie. In 2012, director Alexander Payne transformed Plainview into the fictional town of Hawthorne.







## PLAINVIEW KLOWN DOLL MUSEUM

Corner of Highway 20 & Maple Street, Plainview, NE  
402-582-4433

Open Monday through Friday, 1pm to 4pm or by appointment

Admission Free, Donations Welcome

Website: [www.klowndollmuseum.com](http://www.klowndollmuseum.com)

The Clown Doll Museum is home to over 7,000 clown dolls and other related pieces. The Museum has received numerous awards including Outstanding Attraction by the Northeast Nebraska Travel Council in 2006 and Outstanding Tourist Attraction in Nebraska in a community with 10,000 population or less by the Nebraska Division of Travel and Tourism in 2008.

The Museum is sure to add a smile to your day!

## Northern Nebraska United Mutual Insurance Company

Plainview, NE 68769

402-582-3385 or 1-800-279-4588

Local home town service / Local claim handling  
Fire, Wind, Extended Coverage, Liability, and Auto

## VERDIGRE HERITAGE MUSEUM

206 S. Main St., Verdigre, NE

402-655-2292; Or Call City Offices at 402-688-2621

By Appointment Only and during Kolach Days the second weekend of June.

Admission Free, Donations Welcome

The Museum opened in 1978 and features a complex of four buildings. The main building contains examples of our Czech heritage, music, military, photos, and much more. An adjacent building (originally a hospital, and later a tire and battery shop) contains examples of home life, hospital artifacts, and more. A 1900 brick, one-cell jail building is currently not on display. An 1887 Grist Mill (still in working order) was donated to the town in 1961.

While in Verdigre, be sure to visit our famed ZCBJ Hall circa 1904 and our beautiful 1916 St. Wenceslaus Catholic Church.



*Celebrating 50 years of*  
**KOLACH DAYS**  
June 7 - 10, 2018  
Verdigre, Neb.

Be sure to visit the Verdigre Heritage Museum June 9<sup>th</sup> or 10<sup>th</sup> during Kolach Days



### Interesting Facts of Ice Cream

- The decision on the City of Lincoln for Nebraska State Capital was over a bowl of Ice Cream in 1867
- J's Place location has been established since the 1920s
- Fastest Pierce Pounder was eaten on October 17, 2016 in the time of 2 minutes and 30 seconds.

323 East Main St  
Pierce NE 68767

**402-329-6797**

### **DIXON COUNTY NEWSPAPERS ONLINE**

*Dixon County Historical Society is so happy 8 town newspapers published in Dixon County have been digitized. What a wonderful way to read about the history of our County: There were 10 towns, only 8 had newspapers.*

**Ponca** – <http://ponca.advantage-preservation.com>

**Wakefield** – <http://gardnerpubliclibrary.com:8080/AdvantageClientSearch/goToHome>

**Emerson, Allen, Dixon-Concord, & Newcastle**

<http://dixoncounty.advantage-preservation.com>

**Wayne** – <http://newspapers.cityofwayne.org>



405 Arens Drive  
Hartington, NE 68739  
402-254-9866

*Big City Quality, Small Town Values*



### **WAKEFIELD BALLOON DAYS**

September 21 – 23, 2018

*Hot Air Balloon Launches, parade, craft fair, BBQ Bash,  
Car Show, Kids Games, Food Vendors*  
[www.wakefieldballoonfestival.com](http://www.wakefieldballoonfestival.com)

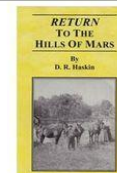
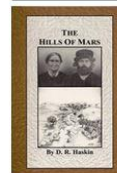


332 East Main  
Pierce NE 68767  
402-329-6795

- ♦ Nebraska State Park Permits & Licenses
- ♦ Live Bait - Minnows & Worms
- ♦ FlavorBurst Ice Cream, Snacks & Ice Cold Beverages
- ♦ Complete Car Care & Tire Service

24 Hour fuel pump with Ethanol Blends -  
e85 - e30 - e15 - e10 & Diesel

**Take an extraordinary journey back to  
the pioneer days of Nebraska.**



***The Hills of Mars Series*  
By D. R. Haskin**

*These bestselling novels document the  
settlement of Verdigris Creek Valley in  
Northeast Nebraska.*

Available at *Mars Historical  
Area, 7 Miles North of  
Royal, NE*  
Or [www.alibris.com](http://www.alibris.com)





*Wakefield Heritage Organization*  
**Annual July 4<sup>th</sup> Old Fashioned Picnic**  
**July 4, 2018**

11am to 1pm at the Wakefield Fire Hall  
Free Will Donation

*Annual Fundraiser for Wakefield Heritage Organization*



**Madison County Bank**

[www.madisoncountybank.com](http://www.madisoncountybank.com)

*Here to help you grow / Serving Northeast Nebraska since 1888*

402 W. Locust; Plainview, NE 68769

402-582-7878



MEMBER FDIC



**VERDIGRE HERITAGE  
MUSEUM**

206 S. Main St.; Verdigre, NE

By Appointment Only – Call 402-655-2292 or 402-688-2621

*Admission Free – Donations Welcome*

*Open for Kolache Days June 9<sup>th</sup>, 11am to 5pm & June 10<sup>th</sup>, 10:30am to 5pm*

**Northeast Nebraska Resource Conservation & Development**



702 E. Park Ave.

Plainview, NE 68769

402-582-4866

*Facilitating community progress, improving viability & enhancing the quality of  
life in Antelope, Cedar, Dixon, Knox, Pierce, & Wayne Counties*

**ROYAL**

LAST  
CHANCE

BAR  
& GRILL

402-893-9999

**ROYAL LAST CHANCE BAR & GRILL**  
**East Hwy 20; Royal, Nebraska**

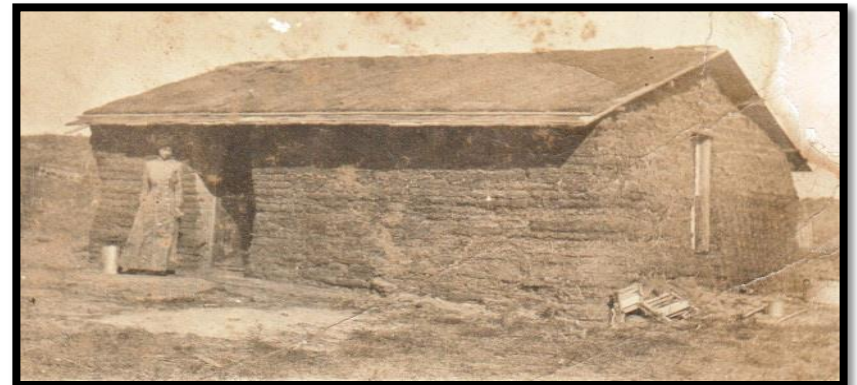
Mon – Fri, 6am to close  
Saturdays, 7am to close  
Sundays, 11am to close

**ROYAL**

LAST  
CHANCE

BAR  
& GRILL

402-893-9999





**Dusty's**

241 E. 2<sup>nd</sup> St. • P.O. Box 219  
Orchard, NE 68764

**STOP IN FOR ALL YOUR  
CONVENIENCE STORE NEEDS!**  
*Gas, Beer, Pop, Snacks, Liquor*

**Don't Forget About Our Kitchen!**  
Serving LUNCH SPECIALS  
Monday - Friday and  
Pizza & Wing Specials Any Day

Store Hours: MON-THUR - 6am to 10pm  
FRI & SAT - 6am to 11pm  
SUN - 7am to 9pm

Kitchen Hours: MON-SAT - 11am-3pm  
& 5pm to 9pm  
SUN - 4pm to 8pm

**402-893-5635**  
**Dine In** *(limited seating)* **or Carry-Out**



The Dixon County Historical Society Presents  
"Saturday Night at the Museum"

*Featuring:*

**June 23, 7pm Brad Kellogg**  
*A Civil War General and the  
Ponca Nebraska Cemetery*

**July 21, 7pm Michele Jacoby**  
*Scanning for Graves in the Holmes  
Cemetery Near Ponca*

**August 25, 7pm Craig Enster**  
*Nebraska & South Dakota  
Ferryboats*

All Presentations are at the Dixon County  
Museum in Allen, NE

Remember, the Dixon County Museum  
is open for the summer  
Season June, July, and August  
Sundays 2pm to 4pm  
Or by appointment - 402-287-2885

**Please fill out the form below and mail this  
entire center sheet to:**

**Northeast Nebraska RC&D  
702 E. Park Ave.  
Plainview, NE 68769**

**Must be postmarked by September 18,  
2018.**

**Name:** \_\_\_\_\_

**Address:** \_\_\_\_\_

**City** \_\_\_\_\_ **State** \_\_\_\_\_ **Zip** \_\_\_\_\_

**# of Museums Visited** \_\_\_\_\_

**Midwest Bank**  
FDIC  **midwestbank.com**

*Service That Builds Relationships*  
Hwy 20; Plainview, NE 402-582-4941

## PASSPORT SHEET

(Museums please place sticker over your listing)

### Antelope County Historical Museum

Hwy 275 & 5<sup>th</sup> Street Neligh, NE; 402-887-5010  
Summer Hours: Tuesday through Saturday, 1pm to 5pm  
Admission \$3.00, Children under 12 and students free  
Website: [www.AntelopeCountyMuseum.org](http://www.AntelopeCountyMuseum.org)

### Ashfall Fossil Beds

2 miles west and 6 miles north of Royal, NE; 402-893-2000  
May 1 to Memorial Day Weekend; Tues – Sat 10am to 4pm  
Memorial Day Weekend to Labor Day; 9am to 5pm Mon - Sat; 11am to 5pm Sunday  
After Labor Day to 2<sup>nd</sup> weekend in October; 10am to 4pm Tues – Sat; 1pm to 4pm Sunday  
Admission \$7.00 age 3 and up, plus Nebraska State Park Entry Permit Required  
Website – [www.ashfall.unl.edu](http://www.ashfall.unl.edu)

### Cedar County Historical Museum

304 W. Franklin, Hartington, NE  
402-254-6597  
May through September, Sundays 2pm to 4pm  
Or call number above to schedule a visit  
Admission Free, Donations Welcome

### Creighton Historical Center

716 Main Street, Creighton, NE  
402-358-3377 or 402-358-3369  
Tuesdays and Thursdays 8am to 5pm  
Admission Free, Donations Welcome

### Dixon County Museum

Corner of 3<sup>rd</sup> & Clark, Allen, NE  
402-287-2885  
June, July, and August, Sundays 2pm to 4pm  
Or call number above for special tours  
Admission Free, Donations Welcome

### Graves Library Museum & Depot Railroad Museum

Graves Museum – 206 West 3<sup>rd</sup> St; Depot Museum – 101 E. 1<sup>st</sup> St, Wakefield, NE  
402-369-0449  
Saturdays 10am to 12pm  
Admission Free, Donations Welcome

## PASSPORT SHEET

(Museums please place sticker over your listing)

### Mars Historical Area Ghost Town Tours

7 miles north of Royal, NE; or from Ashfall Fossil Beds go ¾ mile north, 1.5 miles east, and ½ mile south.  
402-847-3415  
By Appointment Only, call number above to schedule a 3 hour tour.  
Tour cost - \$15 per person age 6 and up; minimum of 2 people  
Facebook Page: [www.facebook.com/marsnebraska](http://www.facebook.com/marsnebraska)

### Pierce Historical Society Museum

Located in Gilman Park, Pierce, NE  
402-329-4265, 402-329-6897, 402-329-4022  
Open Sundays during the summer 1:30pm to 4:30pm  
Or by Appointment (Call numbers above)  
Admission Free, Donations Welcome  
E-mail: [museum@ptcnet.net](mailto:museum@ptcnet.net)  
Facebook: Pierce Historical Society

### Plainview's 1880 Railroad Museum

304 S Main Street, Plainview, NE  
402-582-4730, 402-582-4748, 402-582-3854, or 402-582-4543  
Open June, July, August; Tuesday, Wednesday, Thursday  
1pm to 4pm; Or By Appointment  
Admission Free, Donations Welcome.

### Plainview Klown Doll Museum

Corner of Highway 20 & Maple Street, Plainview, NE  
402-582-4433  
Open Monday through Friday, 1pm to 4pm or by appointment  
Admission Free, Donations Welcome  
Website: [www.klowndollmuseum.com](http://www.klowndollmuseum.com)

### Verdigre Heritage Museum

206 s. Main St., Verdigre, NE  
402-655-2292; Or Call City Offices at 402-688-2621  
By Appointment Only and on Kolache Days the second weekend of June.  
Admission Free, Donations Welcome